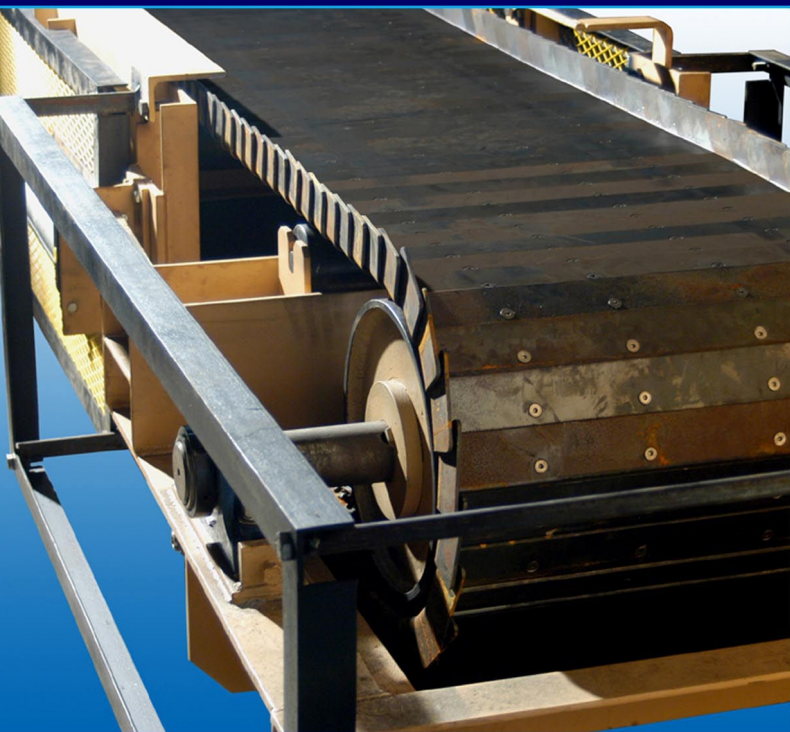
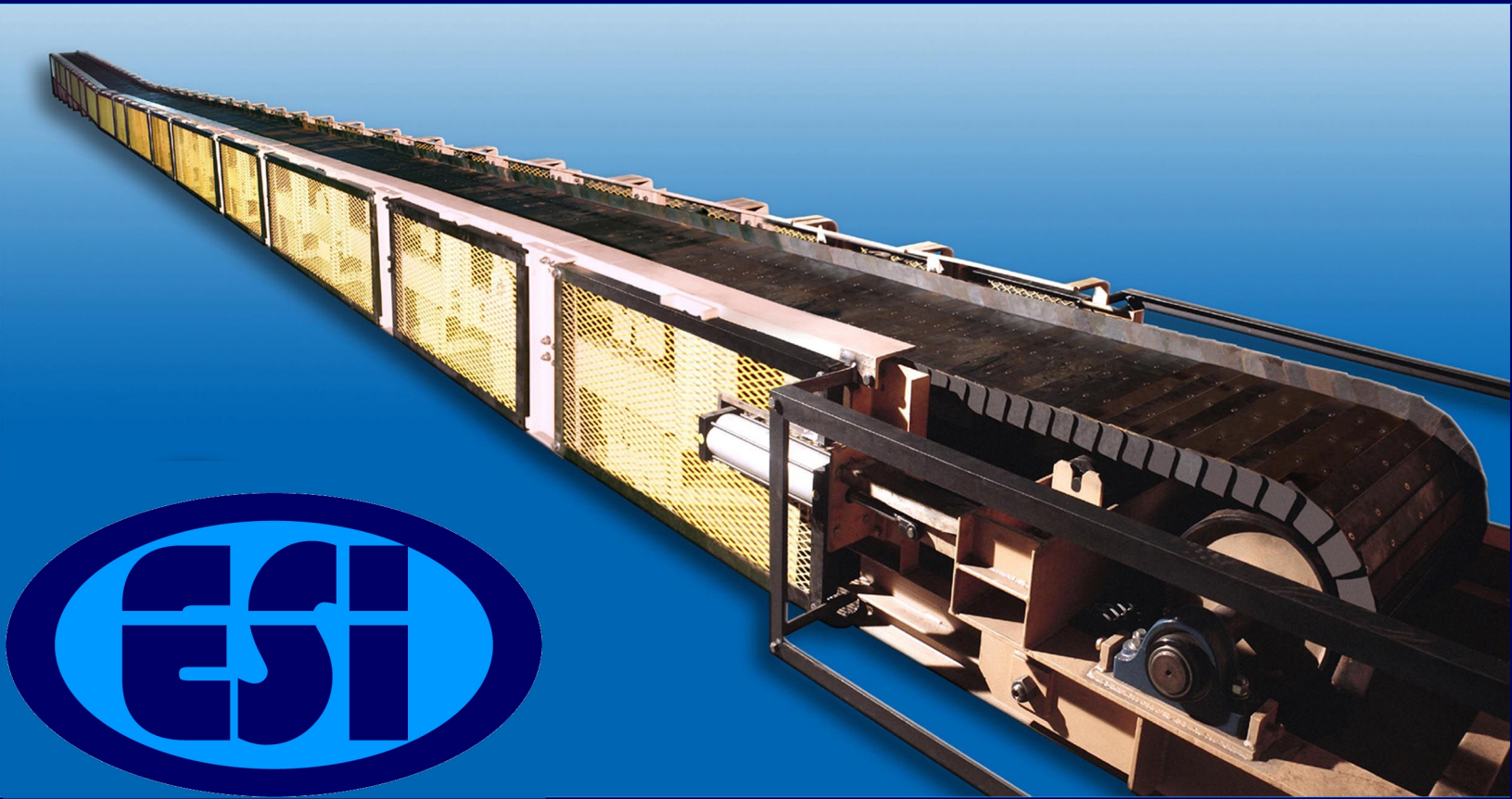


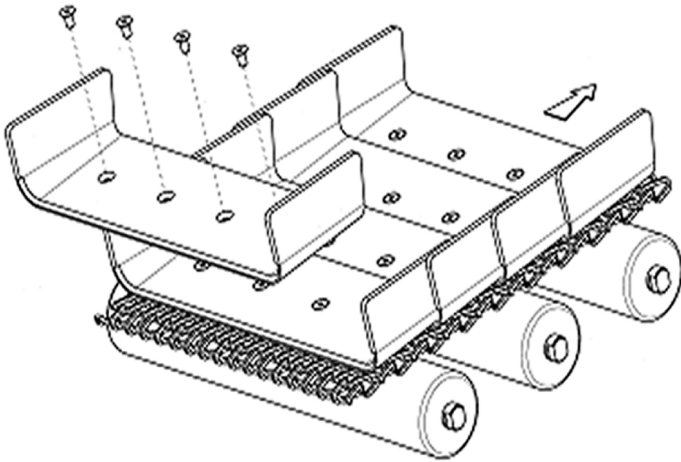
# SUPER-CONVEYOR<sup>®</sup>



**The solution to all applications requiring transporting hot and or abrasive materials.**

# Features SUPER-CONVEYOR®

**Durability 5-10 year life of belt  
inclines of up to 45°  
Material temperatures of up to 900° C  
Pre-lubricated Permanently Sealed Rolling Components  
Heavy Loading and Impact Zone  
Sealed-tight © pan design**



**SUPER-CONVEYOR performs in a similar manner to a traditional rubber belt conveyor. The wire mesh and steel pan belt is supported by upper idlers and lower support rollers. The torque is transmitted by friction via a drive pulley, while tensioning is effected by the use of an active tail pulley tensioning device.**

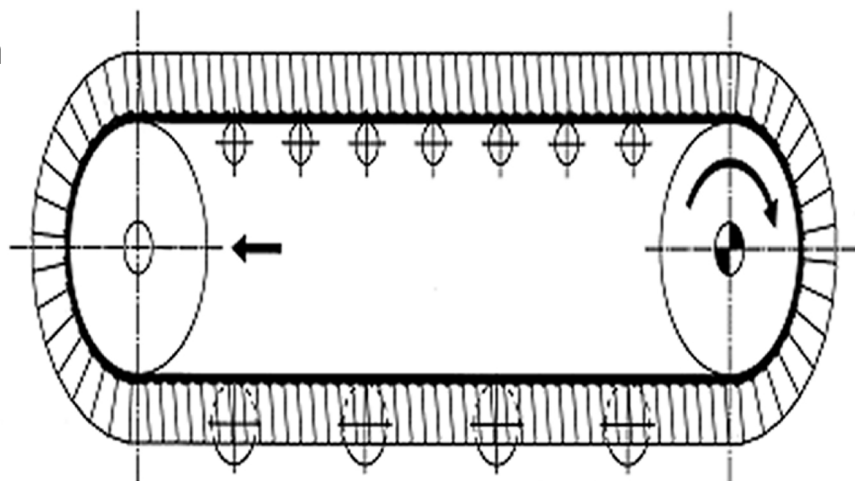
**The SUPER-CONVEYOR belt is an assembly of a continuous series of steel pans, partially overlapped, and fixed to a high tensile steel fabric belt. The steel mesh provides for the torque transmission. The pans are supported across their entire width by upper idlers. Idlers are independent from the pans, life lubricated and easy to replace.**

**The SUPER-CONVEYOR withstands temperatures higher than any other conveyor because the belt components are free to expand in all directions. Constant tension applied from the tensioning device ensures very high contact pressure in the overlapping area of the pans. Consequently, there is no leakage of material thru the pans overlap joints.**

**SUPER-CONVEYOR completely eliminates chains and sprockets, (the critical components of traditional apron conveyors). There is no point-to-point contact during power transmission, the contact torque is uniformly distributed over the large surface area of the circumference of the head pulley.**

**The head section consists of a simple flat pulley similar to the ones used on rubber belt conveyors. The torque is transmitted by friction contact on the wire mesh fabric. The torque transmission is ensured by the pressure applied by the pneumatic take-up in the tail section. The number of the upper idlers in the loading area is increased to ensure shock load resistance. It is not possible to bend the pans on impact loading because they are continuously supported by the idlers. The take-up automatically compensates for adjustments and wearing of the mesh. It takes about two years before the trolley reaches the end of the stroke requiring to shorten the belt.**

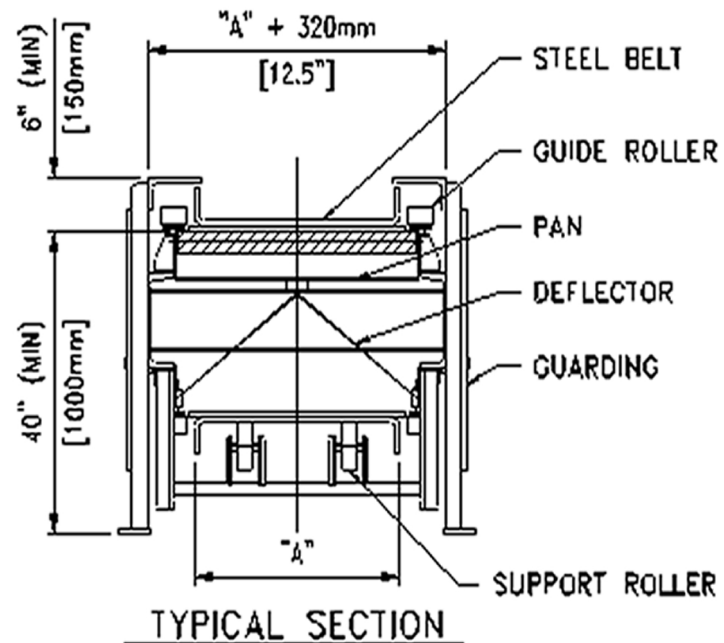
**The SUPER-CONVEYOR belt has no chains, wheels or sprockets so the only points requiring lubrication are the head and tail pulley bearings. Idlers and rollers are life lubricated.**



# SUPER-CONVEYOR®

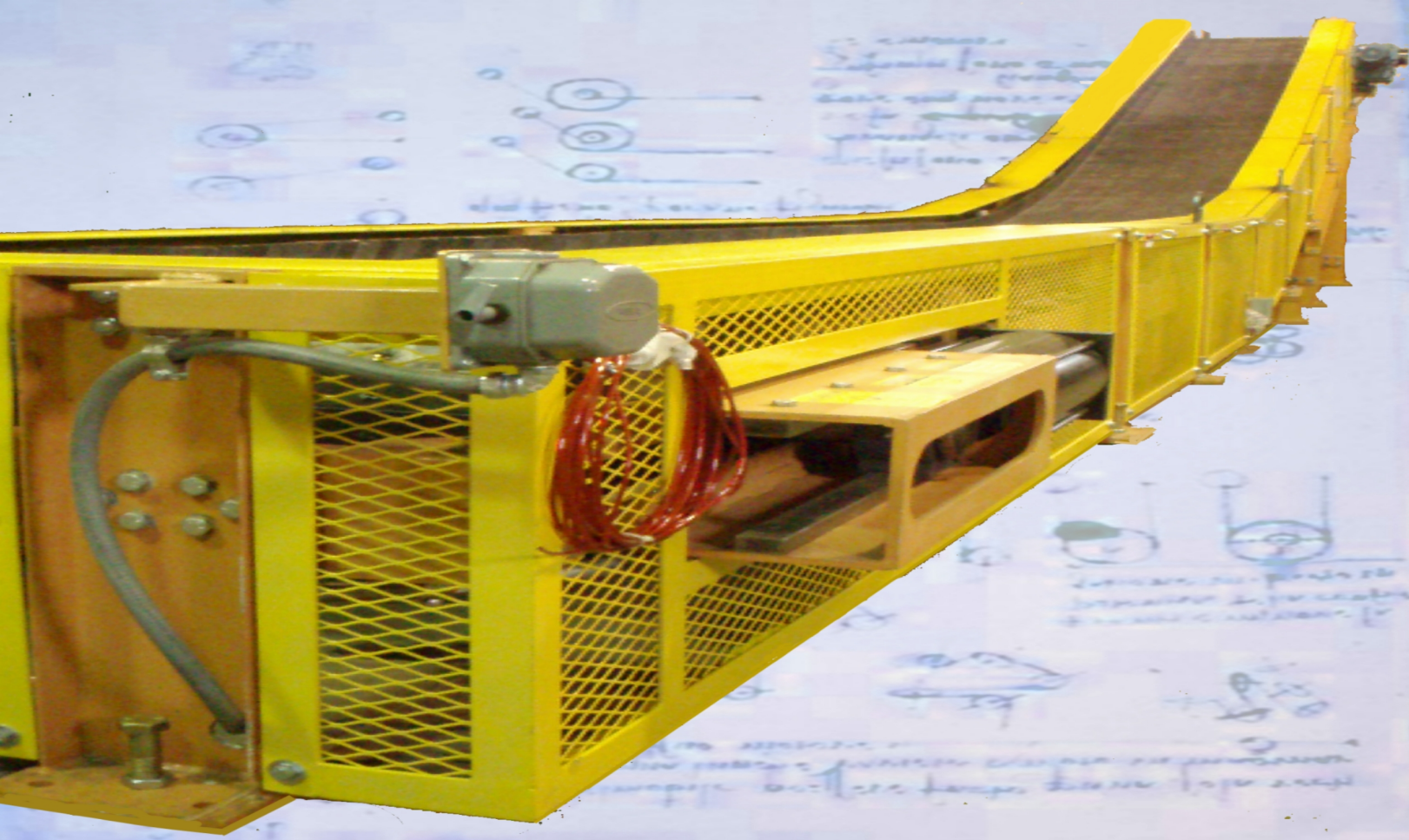
Continuous use in all applications:

**HOT & ABRASIVE**



"A"	
METRIC	INCH
650	26"
800	32"
1000	40"
1200	47"
1600	63"

Contact your **SUPER-CONVEYOR®** Distributor today for details on how to best solve your material handling requirements.



## Industries Served

**Mining  
Foundry  
Cement  
Steel Mill  
Shipping and Transportation  
Quarries  
Environmental Waste  
Coal Handling / Fossil fuel**

## Bulk Materials

**Phosphate  
Lignite  
Clinker  
Ash  
Sand  
Slag**



# **EMPIRE SYSTEMS INC.**

## **INNOVATION FOR INDUSTRY**

**33683 Walker Rd.**

**Avon Lake, Ohio 44012 USA**

**Telephone: (1) 440-653-9300**

**Fax: (1) 440-653-9303**

**Email: [info@empiresystemsinc.com](mailto:info@empiresystemsinc.com)**

**[www.superconveyor.com](http://www.superconveyor.com)**